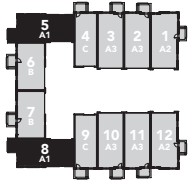


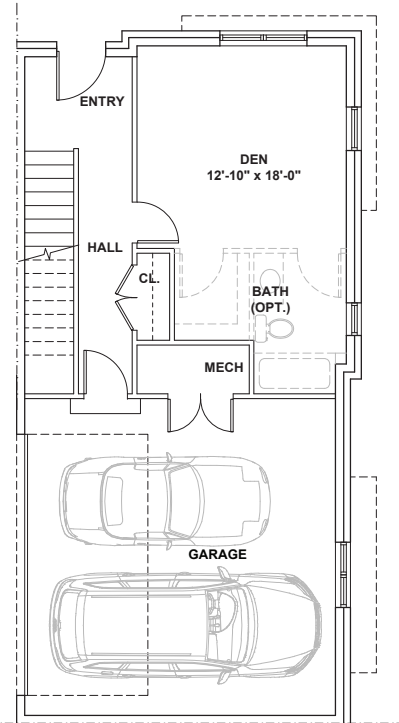
FLOOR PLANS

— **A** | **V** | **E** | **N** | **U** | **E** —
THE
T O W N H O M E S

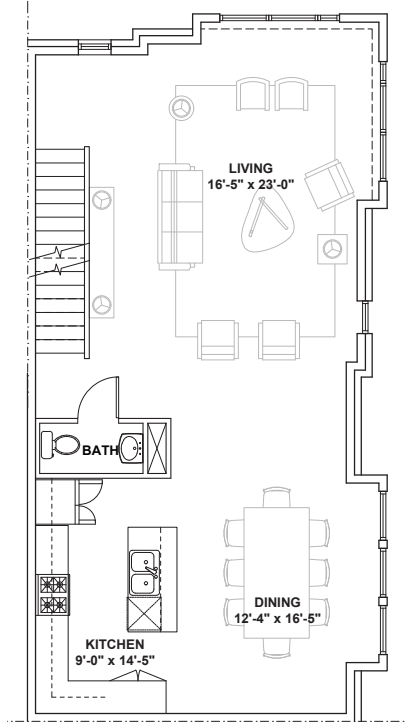


FLOOR PLAN A1

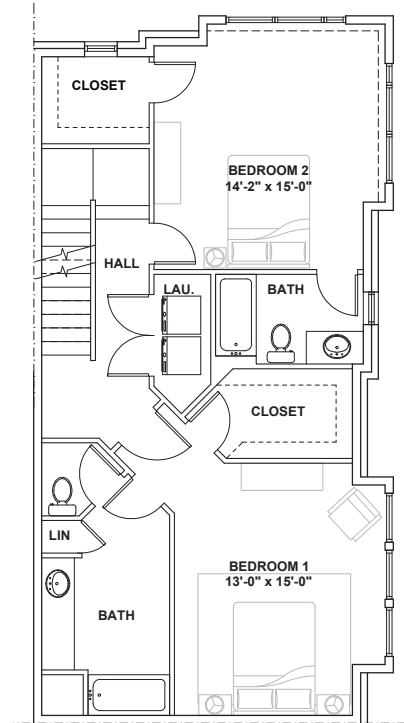
2,195 sf



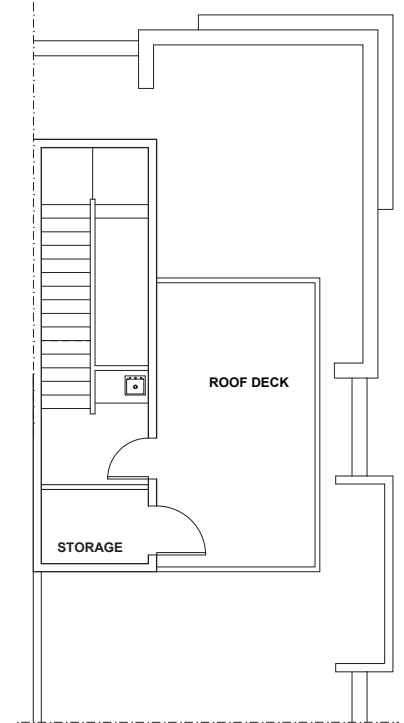
FLOOR 1



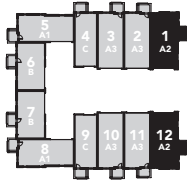
FLOOR 2



FLOOR 3

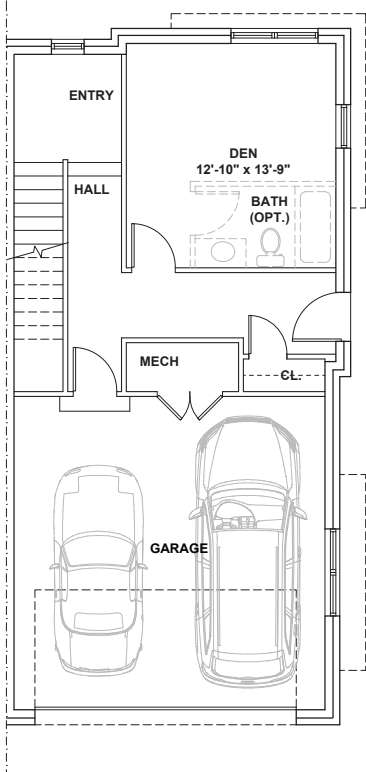


FLOOR 4

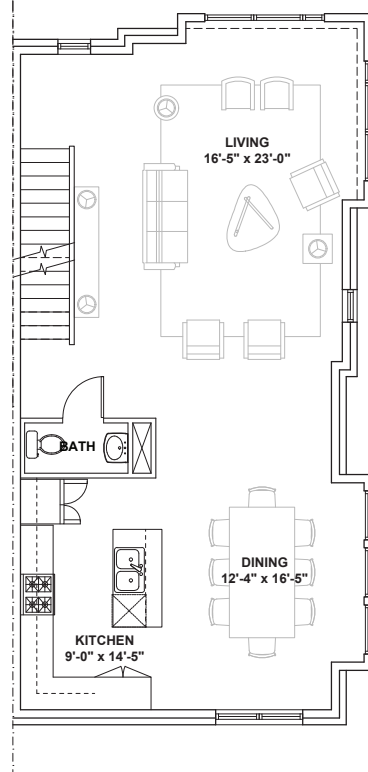


FLOOR PLAN A2

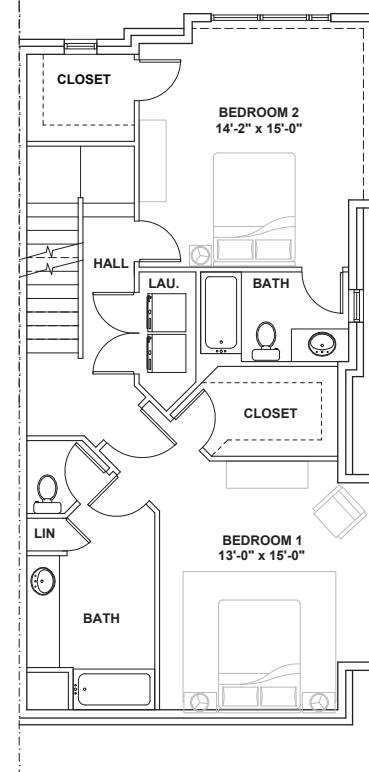
2,185 sf



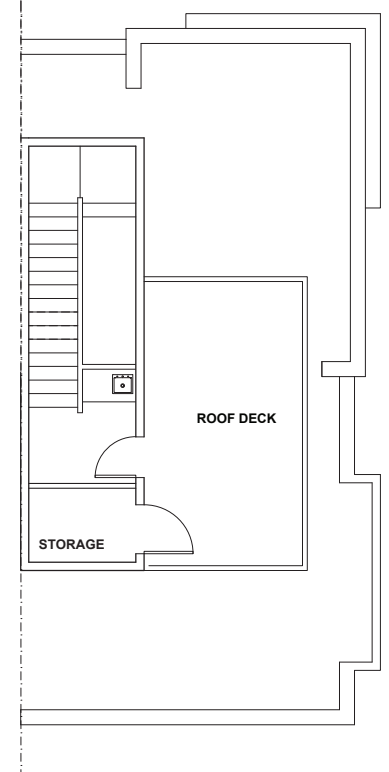
FLOOR 1



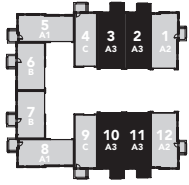
FLOOR 2



FLOOR 3

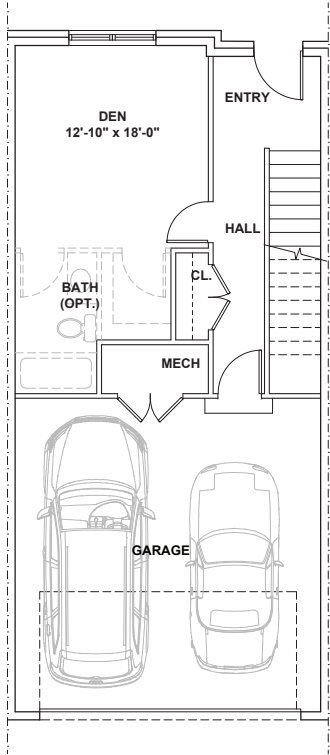


FLOOR 4

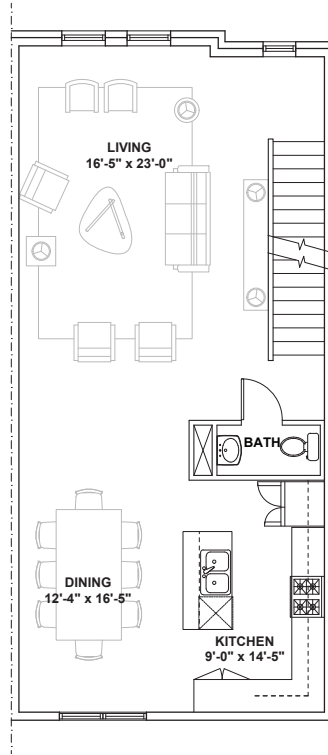


FLOOR PLAN A3

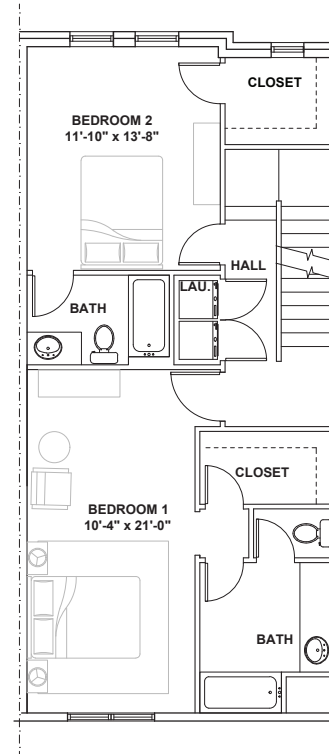
2,025 sf



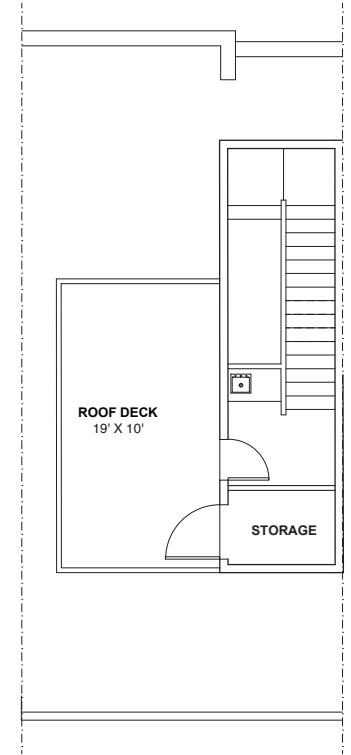
FLOOR 1



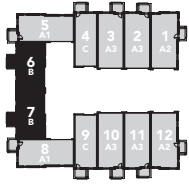
FLOOR 2



FLOOR 3

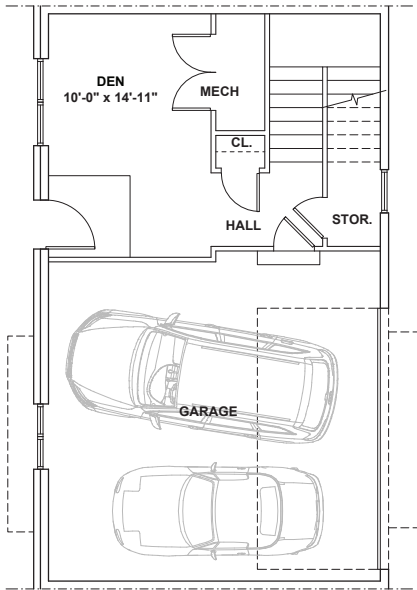


FLOOR 4

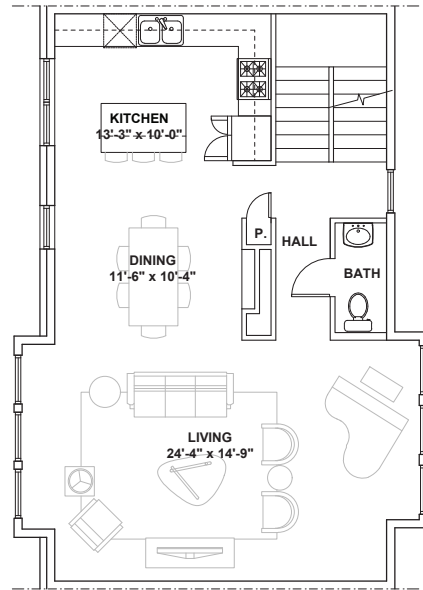


FLOOR PLAN B

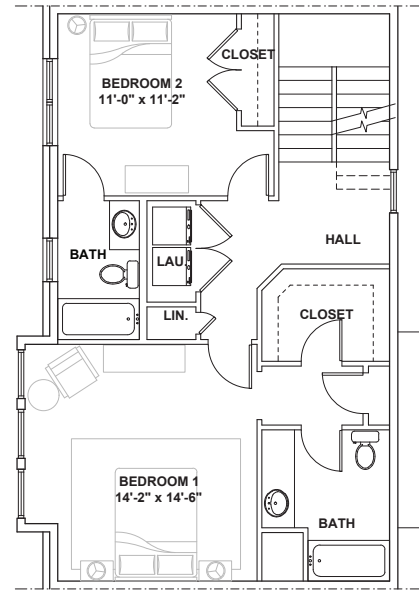
1,887 sf



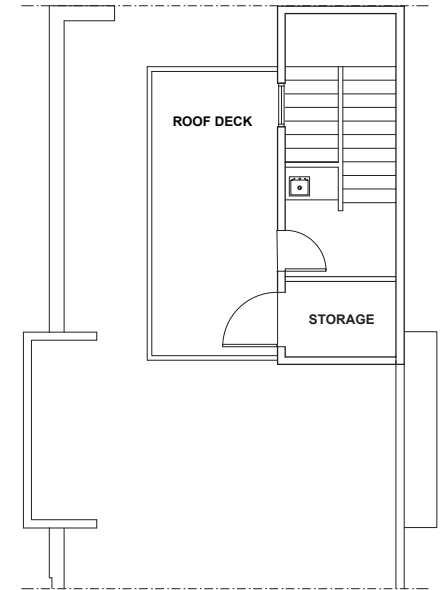
FLOOR 1



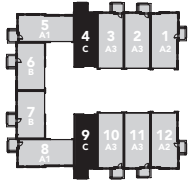
FLOOR 2



FLOOR 3

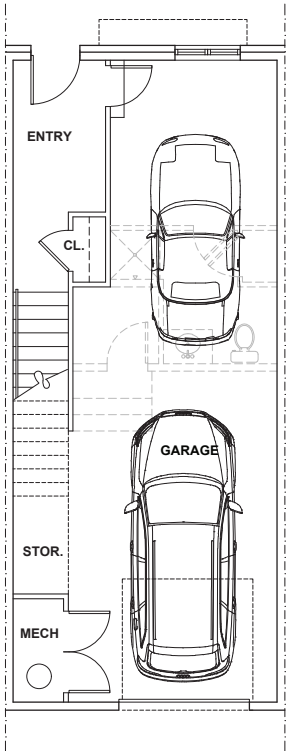


FLOOR 4

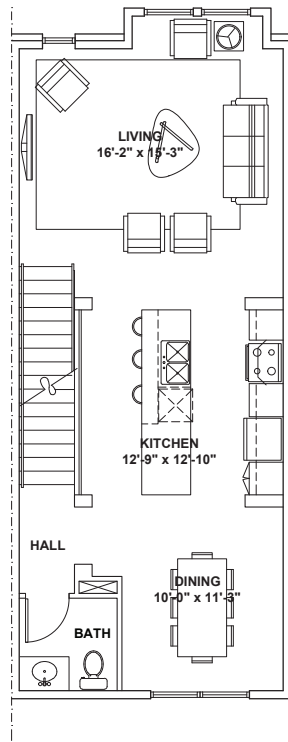


FLOOR PLAN C

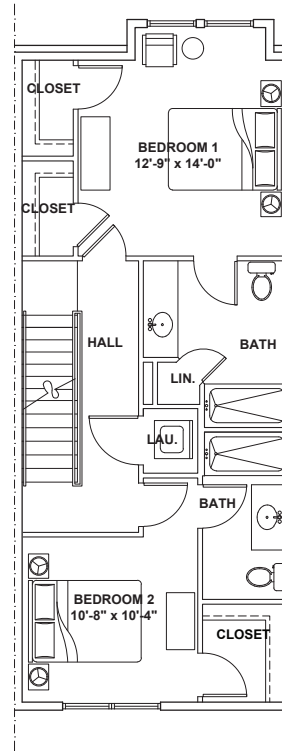
1,567 sf



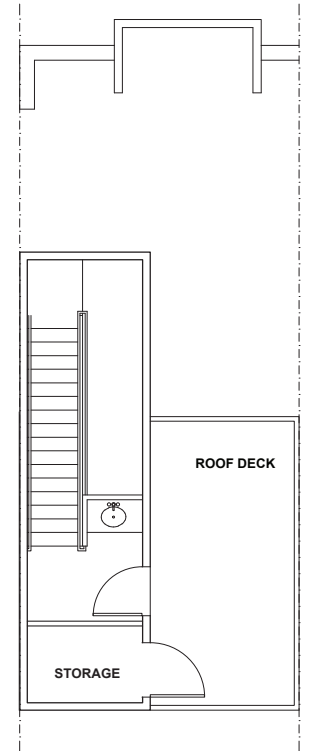
FLOOR 1



FLOOR 2



FLOOR 3



FLOOR 4

FEATURES & SPECIFICATIONS

INTERIOR FEATURES

- 90% energy efficient furnace for heating
- Central air conditioning
- High efficiency water heater
- Moen family plumbing products
- Quality fiberglass tub/shower units in the bathrooms
- Granite countertops with backsplash in kitchen and bathrooms
- Master bath to include a chrome framed shower door system
- Mirrors in all bathrooms
- Fine wood cabinetry
- Gas or electric cooking options
- Water lines to refrigerator
- Undermount stainless steel sink
- Wire shelf in all closets
- 9 ft. tall ceilings on 2nd and 3rd living levels
- Featuring Therma Tru entry doors
- Quality interior solid core doors with painted finish
- Interior trim to include 4" baseboard and 2 ¼" door casing
- Half walls with wood cap at stairs
- Premium latex flat painted walls (one color)
- Schlage door hardware
- 2 phone and 4 cable outlets
- Smoke detectors on all levels
- Pre-finished wood flooring in kitchen, dining and living rooms
- 12" x 12" ceramic tile in foyer, bathrooms and laundry room
- Quality carpet in all other areas
- Two-stage energy seal process, caulk & foam package to increase comfort and decrease energy costs
- R-21 fiberglass insulation in walls
- R-38 fiberglass insulation in ceiling
- \$3,000 appliance allowance
- \$2,000 lighting allowance

EXTERIOR FINISHES

- Full house wrap covering all living areas to reduce air infiltration
- Andersen 100 composite windows cased in wood
- Private rooftop deck with storage closet
- Building exterior to include a blend of various high quality architectural materials and masonry products
- Pre-selected exterior lighting scheme
- Two-car attached garage
- Insulated garage door with opener
- Premium rubber roof membrane
- (2) exterior frost-free spigots
- (2) exterior electrical outlets
- Fully designed landscape package
- 15-year property tax abatement

OPTIONAL

- Composite deck
- Wet bar/fridge/cabinet by deck

A Zaremba. Neighborhood

**Builder reserves the right to make alterations or substitutions regarding floor plans, features and specifications. This information is for reference only and is not part of the legal contract.